

Pivoting Spinning Wheel Blasters

SPECIFICATION: Belt Conveyor

- Swing Clearance 11.5
- 16 Laser Nozzles
- Height Adjustable
- Depth 20.00
- Width 21.00

SUPPORT EQUIPMENT/PARTS NEEDED TO INSTALL

- 1) Car Wash Controller
- 2) Air Compressor (2 CFM)
- 3) 1/4 " Modular Filter, Regulator, Lubricator (FRL) (70 PSI Operating Pressure)
- 4) Activated by Treadle or Photo Eye
- 5) High Pressure Pump Station, 20 gpm, 1000 psi

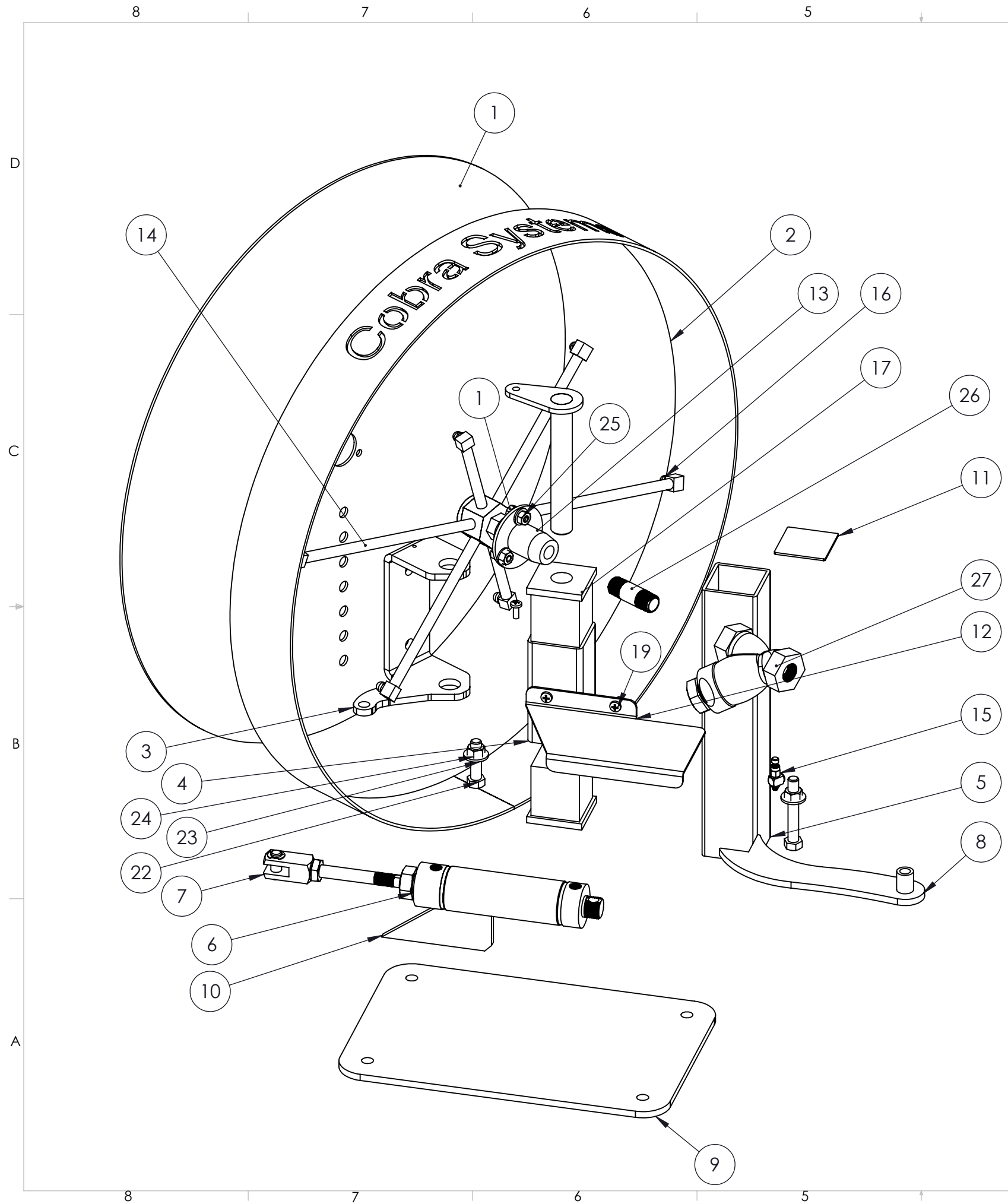
MOUNTING REQUIREMENTS

- 1) 24" X 24" X 24" Area
- 2) Bolt pattern 10" x 6" (see page 1 for details)

THE INFORMATION CONTAINED IN THIS DRAWING IS THE SOLE PROPERTY OF THE COBRA SYSTEM. ANY REPRODUCTION IN PART OR WHOLE WITHOUT THE WRITTEN PERMISSION OF THE COBRA SYSTEM IS PROHIBITED.

4/30/23





ITEM NO.	PART NUMBER	DESCRIPTION	
1	C-301	King Cobra Backplate	1
2	C-302	King Cobra Outside Ring	1
3	C-203	Moving Hinge Bracket	1
4	C-204	Stationary Hinge Bracket	1
5	C-205	Upright Post	1
6	C-230	Cusioned Air Cylinder	1
7	C-231	Cylinder Clevis	1
8	C-206	Stationary Cylinder Mount	1
9	C-207	Base	1
10	C-208	Base Support	1
11	C-209	2" Tube Cap	1
12	C-210	Cylinder Guard	1
13	C-211	Rotary Union 3/8" FNPT	1
14	C-312	King Cobra Wand	1
15	C-213	Flow Control Valve	2
16	C-214	.125 Zero Degree Nozzle	6
17	C-108	Hinge Bushing	2
18	C-119	Hinge Pin	1
19	C-250	CR-BHMS 0.19-32x0.5x0.5-N	3
20	C-251	HBOLT 0.2500-20x0.5x0.5-N	3
21	C-252	HBOLT 0.3750-16x2.5x1-N	1
22	C-256	HBOLT 0.3750-16x1.5x1-N	1
23	C-253	Flat Washer	5
24	C-254	HNUT 0.3750-16-D-N	2
25	C-255	HNUT 0.2500-20-D-N	3
26	C-215	3/8 Nipple	1
27	C-216	SS y Strainer	1

THIRD ANGLE PROJECTION		UNLESS OTHERWISE SPECIFIED DIMENSIONS ARE IN INCHES TOLERANCES ARE: FRACTIONS DECIMALS ANGLES + .XX+ .03 +_1° .XXX+.010		CAD GENERATED DRAWING, DO NOT MANUALLY UPDATE		King Cobra Wheel Blaster	
		MATERIAL SS304		APPROVALS DRAWN SMD		DATE 1/9/22	
NEXT ASSY		USED ON		CHECKED		RESP ENG	
APPLICATION		DO NOT SCALE DRAWING		MFG ENG		QUAL ENG	
				SIZE B		DWG. NO. C-300	
				CAD FILE:		REV. 05	
						SHEET 2 OF 2	

